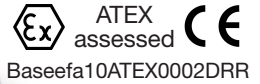
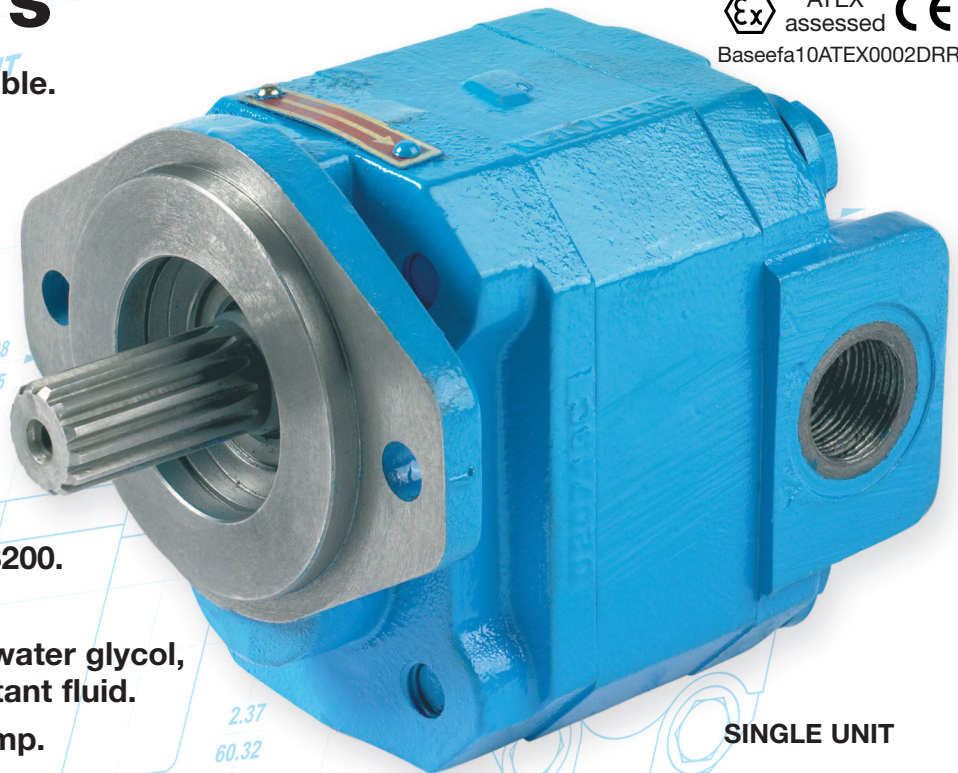


Series 124/424

Bushing Pumps, Motors and Flow Dividers



- Single or multiple units available.
- Displacement 10 cc/rev to 40 cc/rev.
- Gear widths 1/2" to 2".
- Minimum operating speed 600 rpm.
- Maximum continuous operating speed 3000 rpm.
- Maximum continuous operating pressure 4500 psi (310 bar).
- Drive shaft PL factor up to 13200.
- Cast iron construction.
- Compatible with mineral oil, water glycol, invert emulsion and fire resistant fluid.
- Also available as a clutch pump.



SINGLE UNIT

Mounting Flange Options:

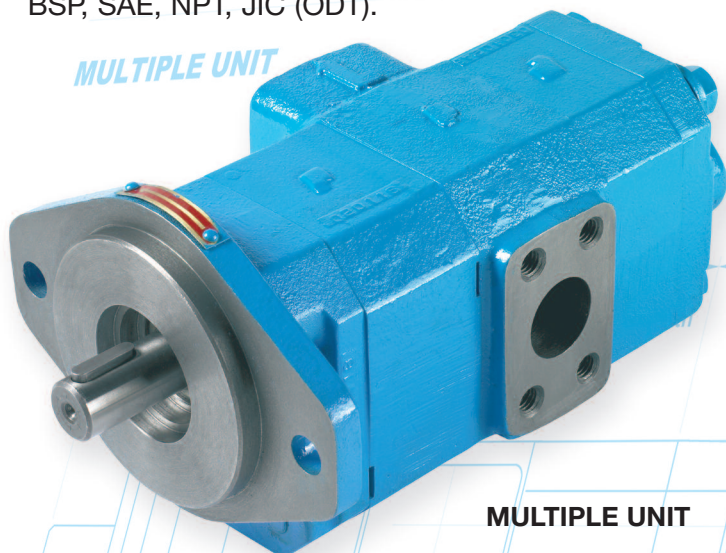
SAE 'A' 2 bolt, SAE 'B' 2 bolt, European 4 bolt Group II.

Drive Shaft Options:

SAE 'A' 9 tooth 11 tooth, SAE 'B' 13 tooth, SAE 'A' keyed, SAE 'B' keyed, 3/4" keyed, 1:8 taper European Group II.

Various Porting Options:

BSP, SAE, NPT, JIC (ODT).



MULTIPLE UNIT

Recommended Operating Conditions:

- Fluid viscosity, normal operating conditions 9 to 220 cst.
- Fluid temperature should not exceed 82 deg. C for mineral oil or 57 deg. C for water glycol.
- Fluid cleanliness, 10 micron filter with Beta 200 rating is recommended.
- Inlet pressure; for best operation with mineral oil, pressure should not exceed minus 0.237 bar (7 in HG) or with water glycol, minus 0.101 bar (3 in HG).

Performance and Dimensions overleaf

Series 124/424 Pumps, Motors and Flow Dividers

PERFORMANCE DATA

Pump Performance

Output- L/min/igpm – Input-Kw/Horsepower ▶				Input Speed – rpm									
				1000		1500		1800					
Gear widths – code	05 07 10 12 15 17 20	Gear widths – inches	1/2 3/4 1 1.1/4 1.1/2 1.3/4 2	Displacement – cc/rev	10 15 20 25 30 35 40	Maximum continuous working pressure – bar/psi	Output	Input	Output	Input	Output	Input	
							241/3500	9 / 1.9	4 / 6	14 / 3.1	7 / 9	17 / 3.7	8 / 11
							241/3500	13 / 2.9	7 / 9	21 / 4.6	10 / 13	26 / 5.7	12 / 16
							241/3500	19 / 4.1	9 / 12	29 / 6.4	13 / 18	35 / 7.7	16 / 21
							241/3500	23 / 5.1	11 / 15	36 / 7.9	16 / 21	44 / 9.7	20 / 27
							228/3300	29 / 6.3	13 / 17	44 / 9.7	19 / 25	53 / 11.7	22 / 30
							200/2900	33 / 7.3	13 / 17	51 / 11.2	19 / 25	62 / 13.7	23 / 31
							172/2500	38 / 8.3	13 / 17	58 / 12.8	19 / 25	70 / 15.4	23 / 31

Motor Performance

				Output Speed – rpm					
				900	1200	1500	1800		
Gear widths – code	10	1	*Gear widths – inches	Input flow. Output hp & torque	Output Kw / hp	7.1 / 9.5	9.5 / 12.7	11.8 / 15.7	14.0 / 18.8
					Output Nm / in.lb	75.1 / 665	75.1 / 665	74.6 / 660	74.0 / 655
					Input l.min / igpm	27.0 / 6.0	33.0 / 7.0	40.0 / 9.0	46.0 / 10.0
	12	1.1/4			Output Kw / hp	9.0 / 11.9	11.9 / 15.8	14.7 / 19.6	17.6 / 23.4
					Output Nm / in.lb	93.8 / 830	93.8 / 830	93.2 / 825	92.6 / 820
					Input l.min / igpm	32.0 / 7.0	40.0 / 9.0	48.0 / 10.5	56.0 / 12.5
	15	1.1/2			Output Kw / hp	10.0 / 13.4	13.4 / 17.9	16.7 / 22.3	20.0 / 26.6
					Output Nm / in.lb	106.2 / 940	106.2 / 940	105.6 / 935	105.1 / 930
					Input l.min / igpm	37.0 / 8.0	46.0 / 10.0	56.0 / 12.5	65.0 / 14.5
	17	1.3/4			Output Kw / hp	10.3 / 13.8	13.8 / 18.4	17.0 / 22.7	20.3 / 27.1
					Output Nm / in.lb	109.0 / 965	109.0 / 965	107.9 / 955	107.3 / 950
					Input l.min / igpm	41.0 / 9.0	52.0 / 11.5	63.0 / 14.0	74.0 / 16.5
20	2	Output Kw / hp	10.2 / 13.6	13.6 / 18.1	16.9 / 22.5	20.1 / 26.8			
		Output Nm / in.lb	107.3 / 950	107.3 / 950	106.8 / 945	106.2 / 940			
		Input l.min / igpm	46.0 / 10.0	59.0 / 13.0	71.0 / 16.0	84.0 / 18.5			

- Flows quoted are at test pressure equivalent to the maximum continuous working pressure, using 32cSt oil at 65 deg C.
- When using water based fluids, the maximum continuous working pressure is reduced, please consult sales department.

424 Series of pumps are available in the following gear widths:

05 – 1/2 – 10 cc
 07 – 3/4 – 15 cc
 10 – 1 – 20 cc

for maximum operating pressures of 310 bar/4500 psi.

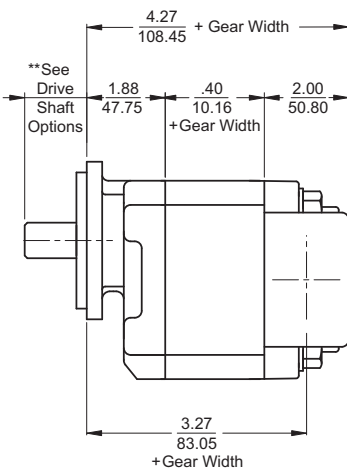
They are available with same shaft, mounting and porting configurations as the 124. Please consult our sales department.

WEIGHTS (approximate)

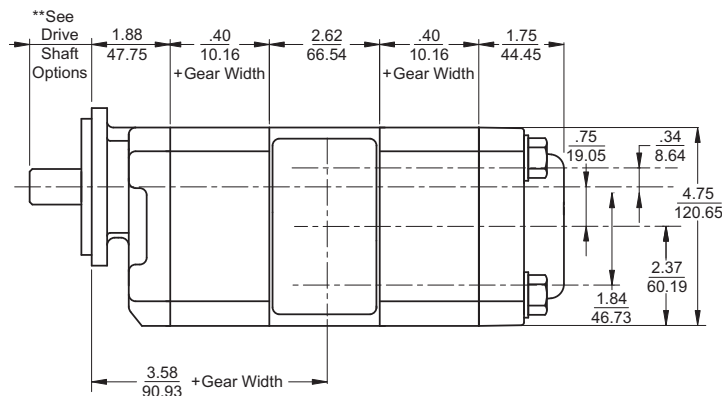
Gear widths (ins)	1/2	3/4	1	1.1/4	1.1/2	1.3/4	2
Single unit (kg)	7.5	8.0	8.5	9.0	9.5	10.0	10.5

For multiple unit weights, please consult our sales department.

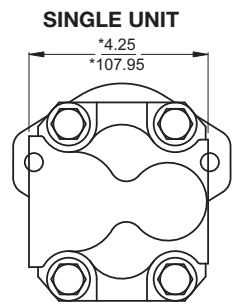
DIMENSIONS



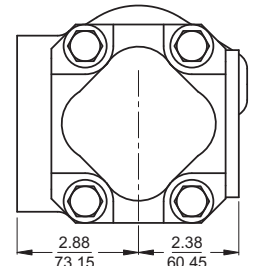
SINGLE UNIT



MULTIPLE UNIT



MULTIPLE UNIT



*Standard port arrangement, dimension will change with type of port.

**Dimensional information for mounting flange and shaft options are shown on the attached Data Sheet FS100.



SSH Permco Inc.

MZ-3 Bansi Trade Center

581/5 M.G. Road Indore-452001 (M.P.) India

Phone : +91-731-4064679 | Email: info@sshpermcoindia.com